

Comparative of Fatal Road Accident 2010 and 2011 (for same period) EXCLUDING RODRIGUES

PARTICULARS	PERIOD		%	PERIOD		Change	% Change
	From: 01 Jan - 11 July (2010)			From: 01 Jan - 11 July (2011)			
Number of Fatal Accidents	71	-		67	-	-4	-5.6
Number of Killed	76	-		83	-	7	9.2
Casualties by Class of Road Users							
Pedestrians	29	38.2		27	32.5	-2	-6.9
Drivers	10	13.2		7	8.4	-3	-30.0
Riders	25	32.9		24	28.9	-1	-4.0
Passengers	5	6.6		20	24.1	15	300.0
Cyclists	5	6.6		3	3.6	-2	-40.0
Pillion Riders	2	2.6		2	2.4	0	0.0
Helper	0	0.0		0	0.0	0	#DIV/0!
Bus Conductor	0	0.0		0	0.0	0	#DIV/0!
Total	76	100.0		83	100.0	7	9.2
Age Group of Casualties (in years)							
< 15	1	1.3		3	3.6	2	200.0
16-25	7	9.2		27	32.5	20	285.7
26-50	27	35.5		29	34.9	2	7.4
51-59	21	27.6		7	8.4	-14	-66.7
60 and above	20	26.3		17	20.5	-3	-15.0
Total	76	100		83	100	7	9.2
Time of Accidents (in hours)							
00 01 - 06 00	7	9.9		4	6.0	-3	-42.9
06 01 - 12 00	19	26.8		18	26.9	-1	-5.3
12 01 - 18 00	22	31.0		18	26.9	-4	-18.2
18 01 - 00 00	23	32.4		27	40.3	4	17.4
Total	71	100		67	100.0	-4	-5.6

Fig 1.0 - Comparison of the percentage of killed by Class of Road Users, 2010 and 2011

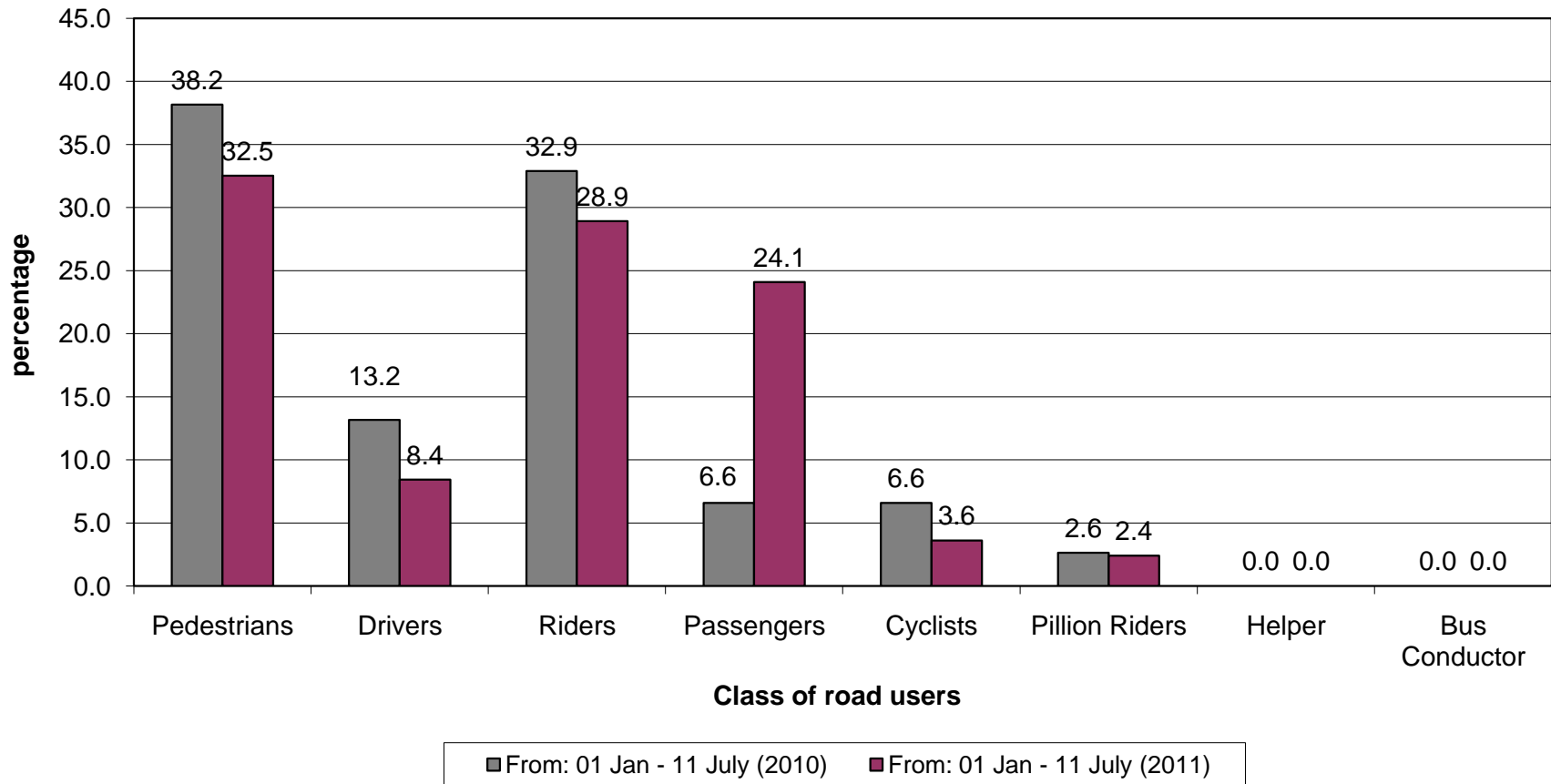


Fig 2.0 - Comparison of the percentage of killed by their age group, 2010 and 2011

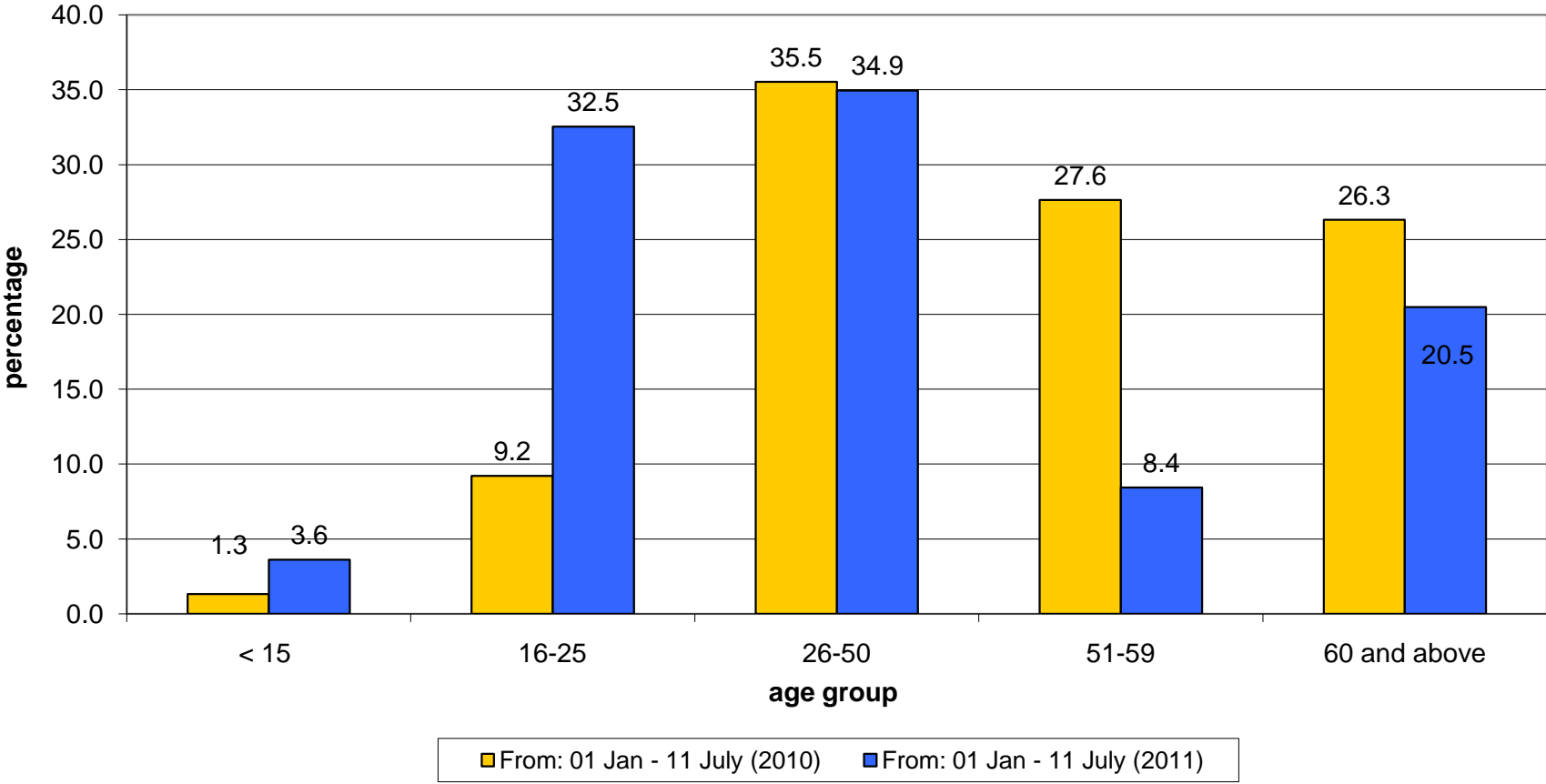


Fig 3.0 - Comparison of the percentage of killed by time, 2010 and 2011

